

Distributed by:

Fiedler Scientific Instruments, s.r.o.  
H. Malířové 1, 638 00 Brno, Czech Republic  
Telephone: (+420) 541 222 795

Email: info@lab-eu.com info@pristroje.cz



**Tubing**

## Table of Contents

---

<b>Rigid Tubing</b> .....	1848–1855
Bev-A-Line® tubing .....	1855
Bulk fluoropolymer tubing.....	1853
Chemfluor®.....	1848–1851
Copper tubing .....	1853
ETFE tubing.....	1849
FEP tubing.....	1851–1852
Fluoropolymer tubing .....	1850–1853
Glass tubing .....	1847
Nylon tubing .....	1854
PFA tubing.....	1849–1851
PTFE tubing.....	1848–1850
PVDF tubing .....	1852
PEEK tubing.....	1853
Polyethylene (PE) tubing.....	1854
Polyimide tubing.....	1855
Polypropylene (PP) tubing .....	1855
<b>Heat-Shrink Tubing</b> .....	1856
<b>Tubing Accessories</b> .....	1856–1858



# Tubing

## Rigid, PTFE

### Chemflur® PTFE Tubing



**Applications:** Chemical transfer and pharmaceutical processes.  
**Characteristics:** Most flexible fluoropolymer. Excellent chemical compatibility. Translucent.  
**Certifications:** FDA-compliant (21 CFS 177.1550).  
**Temperature range:** -450 to 550°F (-268 to 288°C)  
**Sterilize:** Autoclave, ethylene oxide, or dry heat.

Catalog number	Dimensions: in. (mm)			Max psi at 70°F (bar at 21°C)	Price/15.2-m pk
	ID	OD	Wall		
TW-96000-02	1/16 (1.6)	1/8 (0.13)	1/32 (0.8)	156 (10.8)	
TW-96000-04	1/8 (3.2)	1/4 (6.4)	1/16 (1.6)	156 (10.8)	
TW-96000-06	5/32 (4.0)	1/4 (6.4)	3/64 (1.2)	117 (8.1)	
TW-96000-08	3/16 (4.8)	1/4 (6.4)	1/32 (0.8)	78 (5.4)	
TW-96000-10	3/16 (4.7)	5/16 (7.9)	1/16 (1.6)	125 (8.6)	
TW-96000-12	1/4 (6.4)	5/16 (7.9)	1/32 (0.8)	63 (4.3)	
TW-96000-14	1/4 (6.4)	3/8 (9.5)	1/16 (1.6)	104 (7.2)	
TW-96000-16	5/16 (7.9)	3/8 (9.5)	1/32 (0.8)	52 (3.6)	
TW-96000-18	3/8 (9.5)	1/2 (12.7)	1/16 (1.6)	78 (5.4)	
TW-96000-20	1/16 (11.1)	1/2 (12.7)	1/32 (0.8)	39 (2.7)	
TW-96000-26	1/2 (12.7)	5/8 (15.9)	1/16 (1.6)	63 (4.3)	
TW-96000-28	3/16 (14.3)	5/8 (15.9)	1/32 (0.8)	31 (2.2)	
TW-96000-30	5/8 (15.9)	3/4 (19.0)	1/16 (1.6)	52 (3.6)	

Distributed by:

Fiedler Scientific Instruments, s.r.o.  
 H. Malířové 1, 638 00 Brno, Czech Republic  
 Telephone: (+420) 541 222 795



Email: info@lab-eu.com info@pristroje.cz

**Applications:** Ideal for dedicated or multiple lines—provides quick and easy line identification.  
**Characteristics:** Chemically inert, nontoxic, and virtually nonporous. Opaque.  
**Certifications:** None.  
**Temperature range:** -400 to 500°F (-240 to 260°C)  
**Sterilize:** Autoclave, ethylene oxide, or dry heat.

Catalog number	Dimensions: in. (mm)			Max psi at 70°F (bar at 21°C)	Price/3.7-m pk
	ID	OD	Wall		
<b>Red tubing</b>					
TW-96130-02	1/16 (1.6)	1/8 (3.2)	1/32 (0.8)	370 (25.5)	
TW-96130-04	3/16 (4.8)	1/4 (6.4)	1/32 (0.8)	175 (12.1)	
<b>Green tubing</b>					
TW-96130-42	1/16 (1.6)	1/8 (3.2)	1/32 (0.8)	370 (25.5)	
TW-96130-44	3/16 (4.8)	1/4 (6.4)	1/32 (0.8)	175 (12.1)	
<b>Blue tubing</b>					
TW-96130-22	1/16 (1.6)	1/8 (3.2)	1/32 (0.8)	370 (25.5)	
TW-96130-24	3/16 (4.8)	1/4 (6.4)	1/32 (0.8)	175 (12.1)	

Note: Other sizes available upon request; please contact us for details.

Distributed by:

Fiedler Scientific Instruments, s.r.o.  
 H. Malířové 1, 638 00 Brno, Czech Republic  
 Telephone: (+420) 541 222 795

Email: info@lab-eu.com info@pristroje.cz

### Cole-Parmer PTFE Tubing



**Applications:** Demanding lab, chemical, electrical, mechanical, pharmaceutical, and automotive applications. Good for high-purity work. PTFE tubing withstands extreme temperatures.  
**Characteristics:** Chemically inert, nontoxic, and virtually nonporous. Excellent crack- and stress-resistance. Low coefficient of friction. Translucent.  
**Certifications:** Resin is FDA-compliant (21 CFR 177.1550).  
**Temperature range:** -400 to 500°F (-240 to 260°C)  
**Sterilize:** Autoclave, ethylene oxide, or dry heat.

Catalog number	Dimensions: in. (mm)			Max psi at 70°F (bar at 21°C)	Price/7.6-m pk
	ID	OD	Wall		
<b>Standard (English) PTFE tubing</b>					
TW-06407-41	1/32 (0.8)	1/16 (1.6)	1/64 (0.4)	370 (25.5)	
TW-06605-27	1/16 (1.6)	1/8 (3.2)	1/32 (0.8)	370 (25.5)	
TW-06605-28	3/32 (2.4)	5/32 (4.0)	1/32 (0.8)	294 (20.3)	
TW-06605-29	1/8 (3.2)	3/16 (4.8)	1/32 (0.8)	240 (16.5)	
TW-06605-30	1/8 (3.2)	1/4 (6.4)	1/16 (1.6)	375 (25.9)	
TW-06605-31	5/32 (4.0)	1/4 (6.4)	3/64 (1.2)	274 (18.9)	
TW-06605-32	3/16 (4.8)	1/4 (6.4)	1/32 (0.8)	175 (12.1)	
TW-06605-33	3/16 (4.8)	5/16 (8.0)	1/16 (1.6)	294 (20.3)	
TW-06605-34	1/4 (6.4)	5/16 (8.0)	1/32 (0.8)	137 (9.4)	
TW-06605-35	1/4 (6.4)	3/8 (9.6)	1/16 (1.6)	240 (16.5)	
TW-06605-36	19/64 (7.5)	3/8 (9.6)	1/25 (1.0)	143 (9.9)	
TW-06605-37	5/16 (8.0)	3/8 (9.6)	1/32 (0.8)	113 (7.8)	
TW-06605-38	5/16 (8.0)	7/16 (11.2)	1/16 (1.6)	203 (14.0)	
TW-06605-39	3/8 (9.6)	7/16 (11.2)	1/32 (0.8)	96 (6.6)	
TW-06605-40	3/8 (9.6)	1/2 (12.8)	1/16 (1.6)	175 (12.1)	
TW-06605-41	2/5 (10.2)	1/2 (12.8)	1/20 (1.4)	137 (9.4)	
TW-06605-42	7/16 (11.2)	1/2 (12.8)	1/32 (0.8)	83 (5.7)	
TW-06605-43	7/16 (11.2)	9/16 (14.3)	1/16 (1.6)	154 (10.6)	
TW-06605-44	1/2 (12.8)	9/16 (14.3)	1/32 (0.8)	73 (5.0)	
TW-06605-45	1/2 (12.8)	5/8 (16.0)	1/16 (1.6)	137 (9.4)	
TW-06605-46	9/16 (14.3)	5/8 (16.0)	1/32 (0.8)	66 (4.6)	
TW-06605-47	9/16 (14.3)	11/16 (17.5)	1/16 (1.6)	124 (8.5)	
TW-06605-48	5/8 (16.0)	11/16 (17.5)	1/32 (0.8)	59 (4.1)	
TW-06605-49	5/8 (16.0)	3/4 (19.2)	1/16 (1.6)	113 (7.8)	
TW-06605-50	11/16 (17.5)	3/4 (19.2)	1/32 (0.8)	54 (3.7)	
TW-06605-51	3/4 (19.2)	7/8 (22.2)	1/16 (1.6)	96 (6.6)	
<b>Metric PTFE tubing</b>					
TW-06605-52	1.48 mm	3 mm	0.76 mm	370 (25.5)	
TW-06605-53	2.48 mm	4 mm	0.76 mm	225 (15.5)	
TW-06605-54	4.48 mm	6 mm	0.76 mm	175 (12.1)	
TW-06363-10	6.00 mm	7 mm	0.50 mm	30 (2.1)	
TW-06605-55	6.22 mm	8 mm	0.89 mm	155 (10.7)	
TW-06605-56	7.98 mm	10 mm	1.01 mm	143 (9.9)	
TW-06363-20	8.00 mm	9 mm	0.50 mm	30 (2.1)	
TW-06605-57	9.46 mm	12 mm	1.27 mm	137 (9.4)	
TW-06363-30	10.0 mm	12 mm	0.50 mm	30 (2.1)	

### TECHNICAL info!

Use compression fittings with rigid tubing.



### Cole-Parmer Plastic Hose Clamp Kits

Reusable white or black nylon clamps will not rust or corrode; recommended for continuous use from ambient temperature to 180°F (82°C). Clamps are nonconducting and stable in a wide variety of chemicals; black clamps resist UV degradation. For individual clamps, see page 1857.



LZ-06420-99 White hose clamp kit

LZ-06430-49 Black hose clamp kit

## Flared PTFE Tubing Assemblies with Bottom Seal Fittings

### Save time with ready-to-use assemblies

- 1/4-28 flat-bottom port fittings perfect for many standard instrument connections
- Sterilizable assembly with continuous PTFE fluid path

These convenient tubing assemblies with 1/4-28 fittings connect to many instruments and meters. Assemblies feature 1/16" ID tubing with flared ends to provide a fluid path of continuous PTFE—process fluid purity is maintained. All assemblies may be sterilized with ethylene oxide.



Choose from two types of connectors: standard 1/4-28 fittings or the unique Click-N-Seal™ nut. With the Click-N-Seal, simply tighten until the nut clicks to ensure a secure fit—can't overtighten.

### Specifications

**Construction**  
Tubing: PTFE  
Fitting: PC  
Nut: PP  
Seals: EPDM and 316 stainless steel

**Temperature range:**  
40 to 120°F (4 to 49°C)

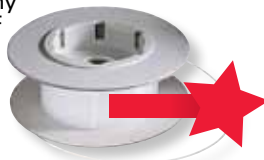
**Max pressure:** 80 psi (5.5 bar)

Tubing ID x OD	Total assembly length <sup>1</sup>	Catalog number	Price/ea	Catalog number	Price/pk of 5
<b>Standard 1/4-28 connectors</b>					
0.040" x 0.066" (1.0 x 1.7 mm)	18" (457 mm)	<a href="#">TW-96154-01</a>		<a href="#">TW-96154-11</a>	
	24" (610 mm)	<a href="#">TW-96154-02</a>		<a href="#">TW-96154-12</a>	
	36" (914 mm)	<a href="#">TW-96154-03</a>		<a href="#">TW-96154-13</a>	
0.062" x 0.125" (1.6 x 3.2 mm)	18" (457 mm)	<a href="#">TW-96154-21</a>		<a href="#">TW-96154-31</a>	
	24" (610 mm)	<a href="#">TW-96154-22</a>		<a href="#">TW-96154-32</a>	
	36" (914 mm)	<a href="#">TW-96154-23</a>		<a href="#">TW-96154-33</a>	
<b>Click-N-Seal 1/4-28 connectors</b>					
0.040" x 0.066" (1.0 x 1.7 mm)	18" (457 mm)	<a href="#">TW-96154-04</a>		<a href="#">TW-96154-14</a>	
	24" (610 mm)	<a href="#">TW-96154-05</a>		<a href="#">TW-96154-15</a>	
	36" (914 mm)	<a href="#">TW-96154-06</a>		<a href="#">TW-96154-16</a>	
0.062" x 0.125" (1.6 x 3.2 mm)	18" (457 mm)	<a href="#">TW-96154-24</a>		<a href="#">TW-96154-34</a>	
	24" (610 mm)	<a href="#">TW-96154-25</a>		<a href="#">TW-96154-35</a>	
	36" (914 mm)	<a href="#">TW-96154-26</a>		<a href="#">TW-96154-36</a>	

<sup>1</sup>Additional lengths are available; contact us for details.

## Cole-Parmer® PTFE Microbore Tubing

Use this translucent tubing in extreme temperatures and in harsh chemical environments. It's chemically inert, has low permeability, and has the lowest friction coefficient of any tubing. Temperature range is -400 to 500°F (-240 to 260°C); melts at 620°F (327°C). Tensile strength is 2500 to 4000 psi. PTFE tubing resin is UL-recognized and complies with FDA (21 CFR 177.1550) and USP Class VI requirements.



Catalog number	Dimensions			Fits needle gauge	Price/30.5-m
	ID	OD	Wall		
<b>Ultramicrobore PTFE tubing (finer than a human hair)</b>					
<a href="#">TW-06417-70</a>	0.002"	0.014"	0.006"	44	
<a href="#">TW-06417-72</a>	0.004"	0.016"	0.006"	38	
<a href="#">TW-06417-74</a>	0.006"	0.016"	0.005"	34	
<a href="#">TW-06417-76</a>	0.008"	0.016"	0.004"	33	
<b>Microbore PTFE tubing</b>					
<a href="#">TW-06417-11</a>	0.012"	0.030"	0.009"	30	
<a href="#">TW-06417-21</a>	0.022"	0.042"	0.010"	24	
<a href="#">TW-06417-31</a>	0.032"	0.056"	0.012"	21	
<a href="#">TW-06417-41</a>	0.042"	0.066"	0.012"	18	
<a href="#">TW-06417-51</a>	0.052"	0.076"	0.012"	16	

**TW-06417-60 Microbore tubing assortment pack.** One 30.5-m roll each of 06417-11, -21, -31, -41, and -51 (152-m total)

## Chemflur® ETFE Tubing



**Applications:** Demanding lab, chemical, electrical, mechanical, and automotive applications. ETFE tubing withstands the highest pressures of all fluoropolymer tubing.

**Characteristics:** Chemically inert, excellent mechanical resistance, low coefficient of friction, and slightly flexible. Translucent.

**Certifications:** Resin meets ASTM standard D3159.

**Temperature range:** -150 to 300°F (-101 to 149°C)

**Sterilize:** Autoclave or ethylene oxide.

Catalog number	Dimensions: in. (mm)			Max psi at 70°F (bar at 21°C)	Price/15.2-m pk
	ID	OD	Wall		
<a href="#">TW-06488-07</a>	1/60 (0.5)	1/16 (1.6)	1/64 (0.5)	975 (67.2)	
<a href="#">TW-06488-08</a>	1/64 (0.4)	1/16 (1.6)	1/32 (0.8)	975 (67.2)	
<a href="#">TW-06488-09</a>	3/32 (2.4)	1/8 (3.2)	3/64 (1.2)	975 (67.2)	
<a href="#">TW-06488-10</a>	1/16 (1.6)	1/8 (3.2)	1/32 (0.8)	975 (67.2)	
<a href="#">TW-06488-11</a>	3/16 (4.8)	1/4 (6.4)	3/64 (1.2)	455 (31.4)	
<a href="#">TW-06488-12</a>	1/8 (3.2)	1/4 (6.4)	1/16 (1.6)	455 (31.4)	
<a href="#">TW-06488-13</a>	0.232 (5.9)	3/16 (8.0)	1/32 (1.1)	290 (20.0)	
<a href="#">TW-06488-14</a>	0.278 (7.1)	3/8 (9.6)	3/64 (1.2)	290 (20.0)	
<a href="#">TW-06488-15</a>	3/8 (9.6)	1/2 (12.8)	1/16 (1.6)	215 (14.8)	

## Chemflur® 367 Tubing



**Applications:** For pharmaceutical, semiconductor, electrical, environmental and other processes dependent on maintaining fluid integrity and high purity.

**Characteristics:** Exceptionally smooth surface, very low extractables with deionized water and acids, excellent chemical resistance and mechanical properties, low counts of trace metals, superior clarity.

**Certifications:** FDA-compliant (21 CFR 177.1550).

**Temperature range:** -400 to 450°F (-240 to 232°C)

**Sterilize:** Ethylene oxide, autoclave, or dry heat.

Catalog number	Dimensions: in. (mm)			Max psi at 73°F (bar at 23°C)	Price/15.2-m pk
	ID	OD	Wall		
<a href="#">TW-95638-00</a>	1/16 (1.6)	1/8 (3.2)	1/32 (0.8)	379 (26.1)	
<a href="#">TW-95638-01</a>	1/8 (3.2)	1/4 (6.4)	1/16 (1.6)	383 (26.4)	
<a href="#">TW-95638-02</a>	3/32 (4.0)	1/4 (6.4)	3/32 (2.4)	266 (18.3)	
<a href="#">TW-95638-03</a>	3/16 (4.8)	1/4 (6.4)	1/32 (0.8)	163 (11.2)	
<a href="#">TW-95638-04</a>	1/4 (6.4)	5/16 (8.0)	1/32 (0.8)	129 (8.9)	
<a href="#">TW-95638-05</a>	1/4 (6.4)	3/8 (9.6)	1/16 (1.6)	230 (15.9)	
<a href="#">TW-95638-06</a>	3/8 (9.6)	1/2 (12.8)	1/16 (1.6)	164 (11.3)	



Distributed by:

Fiedler Scientific Instruments, s.r.o.  
H. Malířové 1, 638 00 Brno, Czech Republic  
Telephone: (+420) 541 222 795

Email: [info@lab-eu.com](mailto:info@lab-eu.com) [info@pristroje.cz](mailto:info@pristroje.cz)

### Cole-Parmer PFA Tubing



**Applications:** Demanding lab, chemical, electrical, mechanical, pharmaceutical, and automotive applications. For the transfer of high-temperature or highly corrosive materials. Also good for high-purity work.

**Characteristics:** Chemically inert, nontoxic, and virtually nonporous. Excellent crack- and stress-resistance. Low coefficient of friction. Translucent.

**Certifications:** Resin is FDA-compliant (21 CFR 177.1550). Tubing is manufactured in ISO 9001-2008 approved facility.

**Temperature range:** -320 to 500°F (-195 to 260°C)

**Sterilize:** Autoclave, ethylene oxide, or dry heat.

Catalog number	Dimensions: in. (mm)			Max psi at 70°F (bar at 21°C)	Price/7.6-m pk
	ID	OD	Wall		
<a href="#">TW-06371-00</a>	1/32 (0.8)	1/16 (1.6)	1/64 (0.4)	600 (41.4)	
<a href="#">TW-06375-01</a>	1/16 (1.6)	1/8 (3.2)	1/32 (0.8)	592 (40.8)	
<a href="#">TW-06371-01</a>	3/32 (2.4)	3/16 (4.0)	1/32 (0.8)	471 (32.5)	
<a href="#">TW-06371-02</a>	1/8 (3.2)	3/16 (4.8)	1/32 (0.8)	385 (26.5)	
<a href="#">TW-06371-21</a>	1/8 (3.2)	1/4 (6.4)	1/16 (1.6)	600 (41.4)	
<a href="#">TW-06375-02</a>	5/32 (4.0)	1/4 (6.4)	3/64 (1.2)	421 (29.0)	
<a href="#">TW-06371-03</a>	3/16 (4.8)	1/4 (6.4)	1/32 (0.8)	280 (19.3)	
<a href="#">TW-06371-22</a>	3/16 (4.8)	5/16 (8.0)	1/16 (1.6)	471 (32.5)	
<a href="#">TW-06375-04</a>	7/32 (5.6)	5/16 (8.0)	3/64 (1.2)	300 (20.7)	
<a href="#">TW-06371-04</a>	1/4 (6.4)	5/16 (8.0)	1/32 (0.8)	220 (15.2)	
<a href="#">TW-06375-05</a>	1/4 (6.4)	3/8 (9.6)	1/16 (1.6)	388 (26.8)	
<a href="#">TW-06371-23</a>	19/64 (7.5)	3/8 (9.6)	5/128 (1.0)	229 (15.8)	
<a href="#">TW-06371-05</a>	5/16 (8.0)	3/8 (9.6)	1/32 (0.8)	180 (12.4)	
<a href="#">TW-06371-24</a>	5/16 (8.0)	7/16 (11/2)	1/16 (1.6)	324 (22.3)	
<a href="#">TW-06371-06</a>	3/8 (9.6)	7/16 (11/2)	1/32 (0.8)	153 (10.5)	
<a href="#">TW-06375-07</a>	3/8 (9.6)	1/2 (12.8)	1/16 (1.6)	283 (19.5)	
<a href="#">TW-06371-25</a>	3/8 (10.2)	1/2 (12.8)	1/20 (1.2)	220 (9.5)	
<a href="#">TW-06371-07</a>	7/16 (11/2)	1/2 (12.8)	1/32 (0.8)	133 (9.2)	
<a href="#">TW-06371-08</a>	1/2 (12.8)	9/16 (14.3)	1/32 (0.8)	117 (8.10)	
<a href="#">TW-06371-26</a>	1/2 (12.8)	5/8 (16.0)	1/16 (1.6)	220 (15.2)	
<a href="#">TW-06371-09</a>	9/16 (14.3)	5/8 (16.0)	1/32 (0.8)	105 (7.2)	
<a href="#">TW-06371-27</a>	9/16 (14.3)	11/16 (17.5)	1/16 (1.6)	198 (13.7)	
<a href="#">TW-06375-08</a>	5/8 (16.0)	3/4 (19.0)	1/16 (1.6)	150 (10.3)	
<a href="#">TW-06371-28</a>	11/16 (17.5)	3/4 (19.0)	1/32 (0.8)	87 (6.0)	
<a href="#">TW-06371-29</a>	3/4 (19.0)	7/8 (22.2)	1/16 (1.6)	153 (10.5)	
<a href="#">TW-06371-30</a>	1 1/4 (31.8)	1 1/2 (33.9)	1/25 (1.2)	80 (5.5)	

### Cole-Parmer High-Purity PFA-450 Tubing



**Applications:** Pharmaceutical, biotechnology, environmental, semiconductor processing, food and beverage, autoanalyser, and nuclear applications.

**Characteristics:** Superior surface smoothness and clarity, low extractables with deionised water and acids, high resistance to stress and cracking. Translucent.

**Certifications:** Resin is FDA-compliant (21 CFR 177.1550). Tubing is manufactured according to GMP.

**Temperature range:** -195 to 260°C (-320 to 500°F)

**Sterilize:** Autoclave, ethylene oxide, gamma irradiation, and dry heat.

Catalog number	Dimensions: in. (mm)			Max psi at 70°F (bar at 21°C)	Price/7.6-m pk
	ID	OD	Wall		
<a href="#">TW-06368-50</a>	1/16 (1.6)	1/8 (3.2)	1/32 (0.8)	592 (40.8)	
<a href="#">TW-06368-51</a>	1/8 (3.2)	3/16 (4.8)	1/32 (0.8)	387 (26.7)	
<a href="#">TW-06368-52</a>	1/8 (3.2)	1/4 (6.4)	1/16 (1.6)	600 (41.4)	
<a href="#">TW-06368-53</a>	5/32 (4.0)	1/4 (6.4)	3/64 (1.2)	420 (29.0)	
<a href="#">TW-06368-54</a>	3/16 (4.8)	1/4 (6.4)	1/16 (1.6)	278 (19.2)	
<a href="#">TW-06368-55</a>	1/4 (6.4)	3/8 (9.6)	1/16 (1.6)	389 (26.8)	
<a href="#">TW-06368-56</a>	3/8 (9.6)	1/2 (12.8)	1/16 (1.6)	283 (19.50)	
<a href="#">TW-06368-57</a>	1/2 (12.8)	5/8 (16.0)	1/16 (1.6)	220 (15.2)	
<a href="#">TW-06368-58</a>	5/8 (16.0)	3/4 (19.2)	1/16 (1.6)	149 (10.3)	
<a href="#">TW-06368-59</a>	3/4 (19.2)	7/8 (22.4)	1/16 (1.6)	141 (9.7)	
<a href="#">TW-06368-60</a>	1/2 (22.4)	1 (25.4)	1/16 (1.6)	133 (9.2)	

### Chemfluor® PFA Tubing



**Applications:** Pharmaceutical processes, cable covering, and electrical applications.

**Characteristics:** Excellent temperature range, chemically inert, tough, flexible, low friction coefficient, ozone-, UV-, stress- and crack-resistant. Translucent.

**Certifications:** FDA-compliant (21 CFR 177-1550). Meets USP Class VI.

**Temperature range:** -320 to 500°F (-195 to 260°C)

**Sterilize:** Autoclave, ethylene oxide, or dry heat.

Catalog number	Dimensions: in. (mm)			Max psi at 70°F (bar at 21°C)	Price/15.2-m pk
	ID	OD	Wall		
<a href="#">TW-96005-08</a>	1/8 (3.2)	3/16 (4.8)	1/32 (0.8)	150 (10.3)	
<a href="#">TW-96005-10</a>	1/8 (3.2)	1/4 (6.4)	1/16 (1.6)	225 (15.5)	
<a href="#">TW-96005-12</a>	5/32 (4.0)	1/4 (6.4)	3/64 (1.2)	169 (11.7)	
<a href="#">TW-96005-16</a>	3/16 (4.8)	5/16 (7.9)	1/16 (1.6)	180 (12.4)	
<a href="#">TW-96005-18</a>	1/4 (6.4)	5/16 (7.9)	1/32 (0.8)	90 (6.2)	
<a href="#">TW-96005-20</a>	1/4 (6.4)	3/8 (9.5)	1/16 (1.6)	150 (10.3)	
<a href="#">TW-96005-26</a>	3/8 (9.5)	7/16 (11.1)	1/32 (0.8)	64 (4.4)	
<a href="#">TW-96005-28</a>	3/8 (9.5)	1/2 (12.7)	1/16 (1.6)	113 (7.8)	
<a href="#">TW-96005-30</a>	7/16 (11.1)	1/2 (12.7)	1/32 (0.8)	56 (3.9)	
<a href="#">TW-96005-36</a>	1/2 (12.7)	5/8 (15.9)	1/16 (1.6)	90 (6.2)	
<a href="#">TW-96005-44</a>	5/8 (15.9)	3/4 (19.0)	1/16 (1.6)	75 (5.2)	
<a href="#">TW-96005-52</a>	3/4 (19.0)	7/8 (22.2)	1/16 (1.6)	64 (4.4)	

### Denatured PTFE Tubing

**Approximately 20% more flexible than standard fluoropolymer tubing!**

**Applications:** Chemical transfer, pharmaceutical processes, compressed air, demanding lab applications.

**Characteristics:** Chemically inert, nontoxic. Excellent crack and stress-resistance. Excellent chemical compatibility. Flexible, with a bend radius as low as 5/8 inch.

**Certifications:** FDA-compliant (21 CFR 177.1550).

**Temperature range:** -400 to 500°F (-240 to 260°C)

**Sterilize:** Autoclave, ethylene oxide, or dry heat.

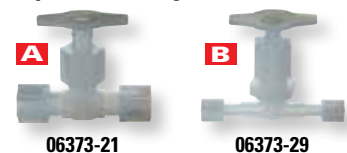


06542-04

Catalog number	Dimensions: in. (mm)			Max psi at 68°F (bar at 20°C)	Price/7.6-m pk
	ID	OD	Wall		
<a href="#">TW-06542-01</a>	0.086 (2.2)	1/8 (3.2)	0.039 (0.5)	203 (14.0)	
<a href="#">TW-06542-02</a>	1/8 (3.2)	3/16 (4.8)	1/32 (0.8)	203 (14.0)	
<a href="#">TW-06542-03</a>	5/32 (4.0)	1/4 (6.4)	3/64 (1.2)	232 (16.0)	
<a href="#">TW-06542-04</a>	1/4 (6.4)	3/8 (9.6)	1/16 (1.6)	203 (14.0)	
<a href="#">TW-06542-05</a>	3/8 (9.5)	1/2 (12.7)	1/16 (1.6)	131 (9.0)	

### PFA Needle Valves with Compression Fittings

When used with fluoropolymer tubing, these valves complete a chemically inert fluid pathway.



06373-21

06373-29

Key	Catalog number	Tube OD	Max psi (bar)	Max temp	Price
<b>Needle valves</b>					
A	<a href="#">LZ-06373-21</a>	3/8"	40 (2.8)	300°F (149°C)	
	<a href="#">LZ-06373-23</a>	1/2"			
<b>Panel-mount needle valves</b>					
E	<a href="#">LZ-06373-29</a>	1/8"	40 (2.8)	300°F (149°C)	
	<a href="#">LZ-06373-31</a>	1/4"			

## Chemflur® FEP Tubing



**Applications:** Abrasive fluids, pharmaceutical processes.

**Characteristics:** Good chemical resistance at a low cost, temperature-resistant, and low coefficient of friction, semi-flexible. Transparent.

**Certifications:** FDA-compliant (21 CFR 177.1550). Meets USP Class VI.

**Temperature range:** -454 to 400°F (-270 to 205°C)

**Sterilize:** Autoclave, ethylene oxide, or dry heat.

Catalog number	Dimensions: in. (mm)			Max psi at 70°F (bar at 21°C)	Price/15.2-m pk
	ID	OD	Wall		
<a href="#">TW-96001-02</a>	1/16 (1.6)	1/8 (3.2)	1/32 (0.8)	213 (14.7)	
<a href="#">TW-96001-04</a>	1/16 (1.6)	3/16 (4.8)	1/16 (1.6)	283 (19.5)	
<a href="#">TW-96001-06</a>	3/32 (2.4)	5/32 (4.0)	1/32 (0.8)	170 (11.7)	
<a href="#">TW-96001-08</a>	1/8 (3.2)	3/16 (4.8)	1/32 (0.8)	142 (9.8)	
<a href="#">TW-96001-10</a>	1/8 (3.2)	1/4 (6.4)	1/16 (1.6)	213 (14.7)	
<a href="#">TW-96001-12</a>	5/32 (4.0)	1/4 (6.4)	3/64 (1.2)	159 (11.0)	
<a href="#">TW-96001-14</a>	3/16 (4.8)	1/4 (6.4)	1/32 (0.8)	106 (7.3)	
<a href="#">TW-96001-16</a>	3/16 (4.8)	5/16 (7.9)	1/16 (1.6)	170 (11.7)	
<a href="#">TW-96001-18</a>	1/4 (6.4)	5/16 (7.9)	1/32 (0.8)	85 (5.9)	
<a href="#">TW-96001-20</a>	1/4 (6.4)	3/8 (9.5)	1/16 (1.6)	142 (9.8)	
<a href="#">TW-96001-22</a>	5/16 (7.9)	3/8 (9.5)	1/32 (0.8)	71 (4.9)	
<a href="#">TW-96001-24</a>	5/16 (7.9)	7/16 (11.1)	1/16 (1.6)	121 (8.3)	
<a href="#">TW-96001-26</a>	3/8 (9.5)	7/16 (11.1)	1/32 (0.8)	61 (4.2)	
<a href="#">TW-96001-28</a>	3/8 (9.5)	1/2 (12.7)	1/16 (1.6)	106 (7.3)	
<a href="#">TW-96001-30</a>	7/16 (11.1)	1/2 (12.7)	1/32 (0.8)	53 (3.7)	
<a href="#">TW-96001-32</a>	7/16 (11.1)	9/16 (14.3)	1/16 (1.6)	94 (6.5)	
<a href="#">TW-96001-34</a>	1/2 (12.7)	9/16 (14.3)	1/32 (0.8)	47 (3.2)	
<a href="#">TW-96001-36</a>	1/2 (12.7)	5/8 (15.9)	1/16 (1.6)	85 (5.9)	
<a href="#">TW-96001-42</a>	5/8 (15.9)	11/16 (17.5)	1/32 (0.8)	39 (2.7)	
<a href="#">TW-96001-44</a>	5/8 (15.9)	3/4 (19.0)	1/16 (1.6)	71 (4.9)	
<a href="#">TW-96001-48</a>	11/16 (17.5)	13/16 (20.6)	1/16 (1.6)	65 (4.5)	
<a href="#">TW-96001-52</a>	3/4 (19.0)	7/8 (22.2)	1/16 (1.6)	61 (4.2)	
<a href="#">TW-96001-56</a>	7/8 (22.2)	1 (25.4)	1/16 (1.6)	53 (3.7)	
<a href="#">TW-96001-60</a>	1 (25.4)	1 1/8 (28.6)	1/16 (1.6)	47 (3.2)	
<a href="#">TW-96001-64</a>	1 1/4 (31.8)	1 3/8 (34.9)	1/16 (1.6)	39 (2.7)	
<a href="#">TW-96001-66</a>	1 1/2 (38.1)	1 9/16 (39.7)	1/32 (0.8)	17 (1.2)	
<a href="#">TW-96001-68</a>	1 1/2 (38.1)	1 5/8 (41.3)	1/16 (1.6)	33 (2.3)	

## Cole-Parmer® FEP Tubing



**Applications:** Demanding lab, chemical, electrical, mechanical, pharmaceutical, and automotive applications. Excellent for the transfer of extreme temperature or highly corrosive materials. Also good for high-purity work.

**Characteristics:** Chemically inert, nontoxic, heat resistant, with a low coefficient of friction. Doesn't deteriorate with age. Tough, but bends even at -454°F (-270°C). Translucent.

**Certifications:** Resin is FDA-compliant (21 CFR 177.1550). Tubing is manufactured in ISO 9001-2008 approved facility.

**Temperature range:** -454 to 400°F (-270 to 205°C)

**Sterilize:** With autoclave, ethylene oxide, or dry heat.

Catalog number	Dimensions: in. (mm)			Max psi at 70°F (bar at 21°C)	Price/7.6-m pk
	ID	OD	Wall		
<a href="#">TW-06406-60</a>	1/32 (0.8)	1/16 (1.6)	1/64 (0.4)	500 (34.5)	
<a href="#">TW-06406-62</a>	1/16 (1.6)	1/8 (3.2)	1/32 (0.8)	444 (30.6)	
<a href="#">TW-06406-63</a>	3/32 (2.4)	5/32 (4.0)	1/32 (0.8)	353 (24.3)	
<a href="#">TW-06406-64</a>	1/8 (3.2)	3/16 (4.8)	1/32 (0.8)	289 (19.9)	
<a href="#">TW-06450-05</a>	1/8 (3.2)	1/4 (6.4)	1/16 (1.6)	450 (31.0)	
<a href="#">TW-06450-04</a>	5/32 (4.0)	1/4 (6.4)	3/64 (1.2)	329 (22.7)	
<a href="#">TW-06406-66</a>	3/16 (4.8)	1/4 (6.4)	1/32 (0.8)	209 (14.4)	
<a href="#">TW-06450-06</a>	3/16 (4.8)	5/16 (8.0)	1/16 (1.6)	353 (24.3)	
<a href="#">TW-06406-72</a>	1/4 (6.4)	5/16 (8.0)	1/32 (0.8)	150 (10.3)	
<a href="#">TW-06450-07</a>	1/4 (6.4)	3/8 (9.6)	1/16 (1.6)	288 (19.9)	
<a href="#">TW-06450-02</a>	19/64 (7.5)	3/8 (9.6)	5/128 (1.0)	172 (11.9)	
<a href="#">TW-06406-74</a>	5/16 (8.0)	3/8 (9.6)	1/32 (0.8)	140 (9.7)	
<a href="#">TW-06450-08</a>	5/16 (8.0)	7/16 (11.2)	1/16 (1.6)	243 (16.8)	
<a href="#">TW-06406-12</a>	3/8 (9.6)	7/16 (11.2)	1/32 (0.8)	110 (7.6)	
<a href="#">TW-06450-09</a>	3/8 (9.6)	1/2 (12.8)	1/16 (1.6)	210 (14.5)	
<a href="#">TW-06406-76</a>	7/16 (11.1)	1/2 (12.8)	1/32 (0.8)	102 (7.0)	
<a href="#">TW-06450-14</a>	7/16 (11.1)	9/16 (14.3)	1/16 (1.6)	185 (12.8)	
<a href="#">TW-06406-18</a>	1/2 (12.8)	9/16 (14.3)	1/32 (0.8)	88 (6.1)	
<a href="#">TW-06450-15</a>	1/2 (12.8)	5/8 (16.0)	1/16 (1.6)	165 (11.4)	
<a href="#">TW-06406-78</a>	9/16 (14.3)	5/8 (16.0)	1/32 (0.8)	77 (5.3)	
<a href="#">TW-06450-00</a>	5/8 (16.0)	11/16 (17.5)	1/32 (0.8)	71 (4.9)	
<a href="#">TW-06450-17</a>	3/8 (9.6)	3/4 (19.2)	1/16 (1.6)	135 (9.3)	
<a href="#">TW-06450-01</a>	11/16 (17.5)	3/4 (19.1)	1/32 (0.8)	65 (4.5)	
<a href="#">TW-06450-19</a>	3/4 (19.2)	7/8 (22.2)	1/16 (1.6)	115 (7.9)	

## Inert 1/4"-28 UNF Tubing Adapters

- Ideal for use with solenoid valves
- No tools required for assembly to tubing!

These 1/4"-28 UNF tube end fittings and inverted cones provide a flangeless fitting that is economical and quick to assemble. Just slip the nut over the tubing, fit the cone to the end of tubing, and screw into the port. The inverted cone sits in a recess in the fitting to allow for maximum thread engagement. The fitting will stay sealed when finger tightened, even in shallow ports such as solenoid valves.



06471-58



06471-56

### Specifications

**Fitting body material:** PTFE

**Cone material:** Tefzel®

**Nut material:** glass-filled polypropylene

**Sealing pressure:** rated to 500 psi (34.5 bar) for 1/16" OD tubing, 250 psi (17.2 bar) for 1/8" OD tubing

Catalog number	Tubing OD	Qty/pk	Price/pk
<b>Inverted cones</b>			
<a href="#">LZ-06471-56</a>	1/16"	10	
<a href="#">LZ-06471-57</a>	1/8"		
<b>1/4"-28 UNF male fittings</b>			
<a href="#">LZ-06471-58</a>	1/16"	10	
<a href="#">LZ-06471-59</a>	1/8"		

## Cole-Parmer® Convoluted Fluoropolymer Tubing



Spiral design promotes complete drainage.

Convoluted spiral design promotes full drainage and increases tubing flexibility. This chemical-resistant fluoropolymer tubing is sold in 1.5-m lengths with 2.5 cm L straight sections at both ends for easy connections. Choose from FEP or PFA formulations. Use tubing with barbed fittings. See our "Fittings" section on pages 509-575.

Catalog number	Cuff ID	Cuff OD	Wall	Max psi at 70°F (bar at 21°C)	Price/1.5-m length
<b>FEP convoluted tubing, -450 to 400°F (-270 to 205°C)</b>					
<a href="#">TW-06486-04</a>	1/4"	3/32"	1/64"	56 (3.9)	
<a href="#">TW-06486-06</a>	3/8"	7/16"	1/32"	43 (3.0)	
<a href="#">TW-06486-08</a>	5/8"	1 1/16"	1/32"	37 (2.6)	
<b>PFA convoluted tubing, -320 to 500°F (-195 to 260°C)</b>					
<a href="#">TW-06487-04</a>	1/4"	3/32"	1/64"	56 (3.9)	
<a href="#">TW-06487-06</a>	3/8"	7/16"	1/32"	43 (3.0)	
<a href="#">TW-06487-08</a>	5/8"	1 1/16"	1/32"	37 (2.6)	

### Cole-Parmer PVDF Tubing



**Applications:** High-purity applications and corrosive chemical transfer—an inexpensive alternative to other fluoropolymer tubing.

**Characteristics:** Polyvinylidene fluoride (PVDF) material is kink resistant; has excellent chemical resistance, and is odorless and nontoxic. Translucent.

**Certifications:** Resin is FDA-compliant (21 CFR 177.2600); meets USP Class VI and USDA requirements.

**Temperature range:** -40 to 260°F (-40 to 127°C)

**Sterilize:** Autoclave and gamma irradiation.

Catalog number	Dimensions: in. (mm)			Max psi at 70°F (bar at 21°C)	Price/ 7.6-m pk
	ID	OD	Wall		
<a href="#">TW-95100-00</a>	1/8 (3.2)	1/4 (6.4)	1/16 (1.6)	350 (24.1)	
<a href="#">TW-95100-02</a>	11/64 (4.2)	1/4 (6.4)	3/64 (1.2)	180 (12.4)	
<a href="#">TW-95100-04</a>	3/16 (4.8)	5/16 (8.0)	1/16 (1.6)	290 (20.0)	
<a href="#">TW-95100-06</a>	1/4 (6.4)	3/8 (9.6)	1/16 (1.6)	240 (16.5)	
<a href="#">TW-95100-10</a>	3/8 (9.6)	1/2 (12.8)	1/16 (1.6)	180 (12.4)	
<a href="#">TW-95100-12</a>	1/2 (12.8)	5/8 (16.0)	1/16 (1.6)	145 (10.0)	
<a href="#">TW-95100-14</a>	5/8 (16.0)	3/4 (19.2)	1/16 (1.6)	120 (8.3)	
<a href="#">TW-95100-16</a>	3/4 (19.2)	7/8 (22.2)	1/16 (1.6)	100 (6.9)	

### Cole-Parmer Superflex Kynar® PVDF Tubing



**Applications:** Chemical, food and beverage, gas thermal cycling, water systems, ground water monitoring, outdoor/extreme conditions.

**Characteristics:** High flexibility, superior chemical compatibility. UV resistant, ozone resistant, radiation resistant, kink resistant, abrasion resistant. Odorless, tasteless, nontoxic. Translucent.

**Certifications:** Material is in compliance with FDA 21 CFR 177.100, meets USP Class VI, USDA UL (94-VO), UL 83 vertical flame test requirements.

**Temperature range:** -80 to 265°F (-62 to 130°C)

**Sterilize:** Autoclave and gamma irradiation.

Catalog number	Dimensions: in. (mm)			Price/ 7.6-m pk
	ID	OD	Wall	
<a href="#">TW-96100-60</a>	1/16 (1.6)	1/8 (3.2)	1/32 (0.8)	
<a href="#">TW-96100-61</a>	3/16 (4.8)	1/4 (6.4)	1/32 (0.8)	
<a href="#">TW-96100-62</a>	1/8 (3.2)	1/4 (6.4)	1/16 (1.6)	
<a href="#">TW-96100-63</a>	1/4 (6.4)	3/8 (9.6)	1/16 (1.6)	

#### Stainless Steel Hose Clamps

SS strap and screw housing with a carbon steel screw. Band-type worm drive.



Catalog number	Clamp diameter		Price/ pk of 10
	Min	Max	
<a href="#">LZ-06403-11</a>	7/32"	5/8"	
<a href="#">LZ-06403-12</a>	9/16"	1 1/16"	
<a href="#">LZ-06403-13</a>	13/16"	1 3/4"	
<a href="#">LZ-06403-14</a>	1 1/16"	2"	
<a href="#">LZ-06403-15</a>	1 5/16"	2 1/4"	
<a href="#">LZ-06403-16</a>	2"	2 3/4"	

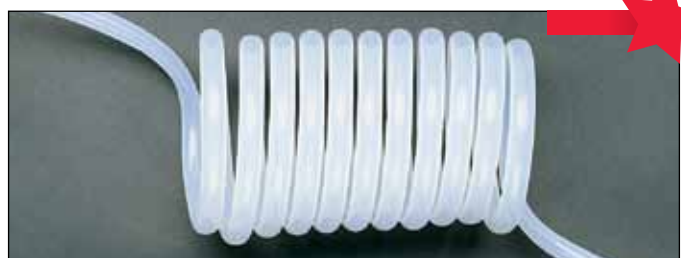
### Cole-Parmer Corrugated FEP Tubing



High flexibility and excellent chemical resistance. Corrugations prevent kinking and help tubing retain its shape without limiting pressure or vacuum abilities. Simply cut this custom-extruded tubing to desired length. Sold in 1.5-m lengths; each length has alternating sections of corrugated (10"L) and noncorrugated (2"L) tubing, with noncorrugated 1"L sections at both ends. Temperature range: -300 to 400°F (-184 to 205°C). Withstands 27" Hg vacuum.

Catalog number	Cuff ID	Cuff OD	Wall	Max psi at 70°F (bar at 21°C)	Price/ 1.5-m length
<b>Tubing compatible with barbed fittings</b>					
<a href="#">TW-06407-50</a>	1/4"	9/32"	1/64"	250 (17.2)	
<a href="#">TW-06407-52</a>	3/8"	13/32"	1/32"	200 (13.8)	
<b>Tubing compatible with compression fittings</b>					
<a href="#">TW-06407-60</a>	7/32"	1/4"	1/64"	250 (17.2)	
<a href="#">TW-06407-62</a>	21/64"	3/8"	1/32"	200 (13.8)	
<a href="#">TW-06407-64</a>	29/64"	1/2"	1/32"	170 (11.7)	
<a href="#">TW-06407-66</a>	11/16"	3/4"	1/32"	120 (8.3)	

### Cole-Parmer Coiled FEP Tubing



Our retractable coil FEP tubing offers the chemical inertness of our standard FEP tubing combined with the flexibility of a coil. FEP tubing has excellent heat resistance, a low coefficient of friction, and won't deteriorate with age. Tubing withstands temperatures from -454 to 400°F (-270 to 205°C); and can be sterilized by autoclave, with ethylene oxide, or by using dry heat. Choose the size and length that best fits your application. Use tubing with compression fittings. See our "Fittings" section on pages 509-575.

Catalog number	Dimensions: in. (mm)				Max psi at 77°F (bar at 25°C)	Price
	ID	OD	Wall	Coil ID		
<b>Coiled FEP tubing, 12" relaxed/24" expanded length</b>						
<a href="#">TW-95821-00</a>	1/8 (3.2)	1/4 (6.4)	1/16 (1.6)	1 (25.4)	450 (31.0)	
<a href="#">TW-95821-02</a>	1/4 (6.4)	3/8 (9.6)	1/16 (1.6)	1 3/4 (44.5)	318 (21.9)	
<a href="#">TW-95821-04</a>	3/8 (9.6)	1/2 (12.8)	1/16 (1.6)	3 (76.2)	210 (14.5)	
<b>Coiled FEP tubing, 24" relaxed/48" expanded length</b>						
<a href="#">TW-95821-01</a>	1/8 (3.2)	1/4 (6.4)	1/16 (1.6)	1 (25.4)	450 (31.0)	
<a href="#">TW-95821-03</a>	1/4 (6.4)	3/8 (9.6)	1/16 (1.6)	1 3/4 (44.5)	318 (21.9)	
<a href="#">TW-95821-05</a>	3/8 (9.6)	1/2 (12.8)	1/16 (1.6)	3 (76.2)	210 (14.5)	

**Cole-Parmer**

**PEEK (Polyetheretherketone) Tubing**



**Applications:** Chromatography.

**Characteristics:** PEEK (polyetheretherketone) tubing is flexible and easy to cut with excellent chemical resistance to both organic and inorganic solvents.

**Certifications:** None.

**Maximum temperature:** 212°F (100°C)

**Sterilize:** Autoclave, ethylene oxide or gamma irradiation.

Catalog number	Color	Dimensions: in. (mm)		Max psi at 70°F (bar at 21°C)	Price/1.5-m pk
		ID	OD		
<a href="#">LZ-02006-00</a>	Natural	0.010 (0.25)	1/16 (1.6)	5000 (344.7)	
<a href="#">LZ-02006-10</a>	Blue	0.010 (0.25)	1/16 (1.6)	5000 (344.7)	
<a href="#">LZ-02006-20</a>	Orange	0.020 (0.51)	1/16 (1.6)	5000 (344.7)	
<a href="#">LZ-02006-30</a>	Green	0.030 (0.76)	1/16 (1.6)	3000 (206.8)	

**PEEK Sample Loops**

Easily change the configuration of your system with these self-adjusting sample loops. Loops provide a variety of inert, PEEK tubing connection options. All models are 1/16" OD.



Catalog number	Color	ID	Length	Volume	Price
<a href="#">LZ-02015-00</a>	Red	0.005"	10 cm	1 µL	
<a href="#">LZ-02015-01</a>			20 cm	3 µL	
<a href="#">LZ-02015-10</a>	Blue	0.010"	10 cm	5 µL	
<a href="#">LZ-02015-11</a>			20 cm	10 µL	
<a href="#">LZ-02015-20</a>	Orange	0.020"	10 cm	20 µL	
<a href="#">LZ-02015-21</a>			20 cm	40 µL	
<a href="#">LZ-02015-30</a>	Green	0.030"	10 cm	46 µL	
<a href="#">LZ-02015-31</a>			20 cm	91 µL	

**Copper Tubing**



**Applications:** Excellent for use with Freon® and noncorrosive chemicals. Ideal for connecting gas lines to gas chromatographs and for general plumbing applications.

**Characteristics:** Seamless. Soft-tempered design allows you to cut tubing to desired length.

**Certification:** None.

**Temperature range:** -60 to 400°F (-53 to 204°C)

**Sterilize:** Autoclave, ethylene oxide, or gamma irradiation.

Catalog number	Dimensions: in. (mm)			Max psi (bar)	Price/15.2-m roll
	ID	OD	Wall		
<a href="#">TW-34671-00</a>	1/16 (1.6)	1/8 (3.2)	1/32 (0.8)	3100 (213.7)	
<a href="#">TW-34671-10</a>	3/16 (4.8)	1/4 (6.4)	1/32 (0.8)	1450 (100.0)	

**Find MORE!**

For our complete line of chromatography products, go to **pages 250-271**.

**Rigid, Chromatography / Copper / Spools**

**Rigid Tubing Spools**

Reduce unpacking time, save money on shipping, and ensure that you always have enough tubing on hand with bulk tubing. Spools are available in FEP, PTFE, and PFA.



See page 1824.

FEP spooled tubing 95230-02

**FEP Tubing Spools**



**Applications:** Transfer of abrasive fluids, pharmaceutical processes.

**Characteristics:** Good chemical resistance at a low cost, temperature-resistant, and low coefficient of friction, semi-flexible. Transparent.

**Certifications:** FDA compliant (21 CFR 177.1550). Meets USP Class VI.

**Temperature range:** -454 to 400°F (-270 to 205°C)

**Sterilize:** Autoclave, ethylene oxide, or dry heat.

Catalog number	Dimensions in. (mm)			Qty/spool	Price
	ID	OD	Wall		
<a href="#">TW-95230-00</a>	1/16 (1.6)	1/8 (3.2)	1/32 (0.8)	76 m	
<a href="#">TW-95230-02</a>	1/8 (3.2)	1/4 (6.4)	1/16 (1.6)		
<a href="#">TW-95230-04</a>	5/32 (4.0)	1/4 (6.4)	3/64 (1.19)		
<a href="#">TW-95230-06</a>	3/16 (4.8)	1/4 (6.4)	1/32 (0.8)		
<a href="#">TW-95230-08</a>	1/4 (6.4)	5/16 (8.0)	1/32 (0.8)		
<a href="#">TW-95230-10</a>	1/4 (6.4)	3/8 (9.6)	1/16 (1.6)		
<a href="#">TW-95230-12</a>	5/16 (8.0)	3/8 (9.6)	1/32 (0.8)	30.5 m	
<a href="#">TW-95230-14</a>	3/8 (9.6)	1/2 (12.8)	1/16 (1.6)		
<a href="#">TW-95230-16</a>	7/16 (11.2)	1 1/2 (12.8)	1/32 (0.8)		
<a href="#">TW-95230-18</a>	1/2 (12.8)	5/8 (16.0)	1/16 (1.6)		

**PTFE Tubing Spools**



See page 1824.

**Applications:** Chemical transfer and pharmaceutical processes.

**Characteristics:** Most flexible of the fluoropolymer tubings.

Excellent chemical compatibility. Translucent.

**Certifications:** FDA-compliant (21 CFS 177.1550).

**Temperature range:** -450 to 550°F (-268 to 288°C)

**Sterilize:** Autoclave, ethylene oxide, or dry heat.

Catalog number	Dimensions in. (mm)			Qty/spool	Price
	ID	OD	Wall		
<a href="#">TW-95231-00</a>	1/16 (1.6)	1/8 (3.2)	1/32 (0.8)	76 m	
<a href="#">TW-95231-02</a>	1/8 (3.2)	1/4 (6.4)	1/16 (1.6)		
<a href="#">TW-95231-04</a>	5/32 (4.0)	1/4 (6.4)	3/64 (1.19)		
<a href="#">TW-95231-06</a>	3/16 (4.8)	1/4 (6.4)	1/32 (0.8)	76 m	
<a href="#">TW-95231-08</a>	1/4 (6.4)	5/16 (8.0)	1/32 (0.8)		
<a href="#">TW-95231-10</a>	1/4 (6.4)	3/8 (9.6)	1/16 (1.6)	30.5 m	
<a href="#">TW-95231-12</a>	5/16 (8.0)	3/8 (9.6)	1/32 (0.8)		
<a href="#">TW-95231-14</a>	3/8 (9.6)	1/2 (12.8)	1/16 (1.6)		
<a href="#">TW-95231-16</a>	7/16 (11.2)	1/2 (12.8)	1/32 (0.8)		
<a href="#">TW-95231-18</a>	1/2 (12.8)	5/8 (16.0)	1/16 (1.6)		

**Chromatography Tubing**

316 Stainless steel tubing offers good chemical resistance.

Catalog number	Dimensions (OD x ID)	Max temperature	Max psi at -65 to 500°F (bar at -53 to 289°C)	Qty/pk	Price/pk
<a href="#">LZ-03300-02</a>	1/16" x 0.032"	550°F (288°C)	3000 (206.8)	Two 91-cm lengths	
<a href="#">LZ-03300-05</a>	1/8" x 0.055"				
<a href="#">LZ-03300-10</a>	1/4" x 0.180"				
<a href="#">LZ-03300-15</a>	3/8" x 0.305"				
<a href="#">LZ-03300-20</a>	1/2" x 0.380"				



# Tubing

Rigid, Polyethylene / Nylon

## Cole-Parmer FEP-Lined Polyethylene (PE) Tubing



**Applications:** Ground water and other sampling and monitoring uses that require the high purity and chemical inertness of FEP.

**Characteristics:** Chemically inert, nontoxic FEP liner with a durable polyethylene jacket. Rigid but bends at low temperatures. Translucent.

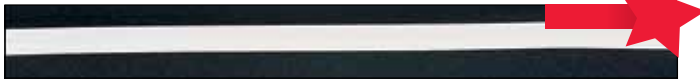
**Certifications:** Material is manufactured in ISO 9001-2008 approved facility.

**Temperature range:** -100 to 175°F (-73 to 80°C)

**Sterilize:** Ethylene oxide.

Catalog number	Dimensions: in. (mm)			Max psi at 70°F (bar at 21°C)	Price/30.5-m pk
	ID	OD	Wall		
<a href="#">TW-06385-01</a>	1/8 (3.2)	1/4 (6.4)	1/16 (1.6)	450 (31.0)	
<a href="#">TW-06385-02</a>	3/16 (4.8)	1/4 (6.4)	1/32 (0.8)	209 (14.4)	
<a href="#">TW-06385-03</a>	1/4 (6.4)	3/8 (9.6)	1/16 (1.6)	288 (19.9)	
<a href="#">TW-06385-04</a>	3/8 (9.6)	1/2 (12.8)	1/16 (1.6)	210 (14.5)	
<a href="#">TW-06385-06</a>	1/2 (12.8)	5/8 (16.0)	1/16 (1.6)	165 (11.4)	

## Linear LDPE Tubing



**Applications:** General lab, industry, or food processing applications.

**Characteristics:** Broad chemical resistance; more flexible than other polyethylene formulations. Nontoxic, odorless, and tasteless. Translucent.

**Certifications:** FDA-compliant (21 CFR 177.1520).

**Temperature range:** -100 to 176°F (-73 to 80°C)

**Sterilize:** Ethylene oxide.

Catalog number	Dimensions: in. (mm)			Working psi at 70°F (bar at 21°C)	Price/pk
	ID	OD	Wall		
<a href="#">TW-95912-01</a>	1/8 (3.2)	1/4 (6.4)	1/16 (1.6)	358 (24.7)	/30.5-m
<a href="#">TW-95912-03</a>	1/4 (6.4)	3/8 (9.6)	1/16 (1.6)	214 (14.8)	/30.5-m
<a href="#">TW-95912-04</a>	3/8 (9.6)	1/2 (12.8)	1/16 (1.6)	152 (10.5)	/30.5-m
<a href="#">TW-95912-05</a>	1/2 (12.8)	5/8 (16.0)	1/16 (1.6)	118 (8.1)	/30.5-m
<a href="#">TW-95912-06</a>	3/4 (19.2)	1 (25.4)	1/16 (1.6)	96 (6.6)	/30.5-m
<a href="#">TW-95912-08</a>	1 (25.4)	1 1/4 (31.8)	1/8 (3.2)	120 (8.3)	/15.2-m

## Cole-Parmer Low-Density Polyethylene (LDPE) Tubing



**Applications:** General low pressure and temperature, instrumentation, corrosive atmosphere, and food processing applications.

**Characteristics:** Broad chemical, solvent, and corrosive atmosphere resistance with good dimensional stability. Translucent.

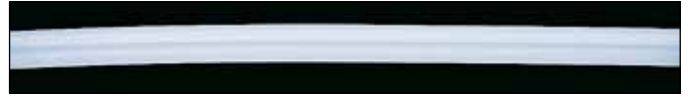
**Certifications:** FDA-compliant (21 CFR 177.1520); meets USDA requirements.

**Temperature range:** -100 to 175°F (-73 to 80°C)

**Sterilize:** Ethylene oxide.

Catalog number	Dimensions: in. (mm)			Max psi at 70°F (bar at 21°C)	Price/30.5-m pk
	ID	OD	Wall		
<a href="#">TW-95876-00</a>	5/64 (2.0)	1/8 (3.2)	1/32 (0.8)	125 (8.6)	
<a href="#">TW-95876-01</a>	7/64 (2.8)	1/8 (3.2)	1/32 (0.8)	125 (8.6)	
<a href="#">TW-95876-02</a>	1/8 (3.2)	3/16 (4.8)	1/32 (0.8)	125 (8.6)	
<a href="#">TW-95876-03</a>	1 1/64 (4.3)	1/4 (6.4)	3/64 (1.2)	125 (8.6)	
<a href="#">TW-95876-05</a>	1/4 (6.4)	3/8 (9.6)	1/16 (1.6)	125 (8.6)	
<a href="#">TW-95876-06</a>	3/8 (9.6)	1/2 (12.8)	1/16 (1.6)	100 (6.9)	

## High-Density Polyethylene (HDPE) Tubing



**Applications:** General-purpose lab and industrial use.

**Characteristics:** Low moisture absorption, good chemical and corrosion-resistance, high tensile strength.

**Certifications:** None

**Temperature range:** -103 to 151°F (-75 to 66°C)

**Sterilize:** Autoclave.

Catalog number	Dimensions: in. (mm)			Working psi at 70°F (bar at 21°C)	Price/30.5-m pk
	ID	OD	Wall		
<a href="#">TW-95501-00</a>	1/8 (3.2)	1/4 (6.4)	1/16 (1.6)	456 (31.4)	
<a href="#">TW-95501-02</a>	0.170 (4.3)	1/4 (6.4)	0.040 (1.0)	260 (17.9)	
<a href="#">TW-95501-04</a>	3/16 (4.8)	5/16 (8.0)	1/16 (1.6)	340 (23.4)	
<a href="#">TW-95501-06</a>	1/4 (6.4)	3/8 (9.6)	1/16 (1.6)	272 (18.8)	
<a href="#">TW-95501-08</a>	5/16 (8.0)	7/16 (11.2)	1/16 (1.6)	228 (15.7)	
<a href="#">TW-95501-10</a>	3/8 (9.6)	1/2 (12.8)	1/16 (1.6)	194 (13.4)	
<a href="#">TW-95501-12</a>	1/2 (12.8)	5/8 (16.0)	1/16 (1.6)	151 (10.4)	
<a href="#">TW-95501-14</a>	0.600 (15.2)	3/4 (19.2)	3/4 (1.9)	152 (10.5)	
<a href="#">TW-95501-16</a>	5/8 (16.0)	3/4 (19.2)	1/16 (1.6)	123 (8.5)	
<a href="#">TW-95501-18</a>	3/4 (19.2)	7/8 (22.4)	1/16 (1.6)	105 (7.2)	
<a href="#">TW-95501-20</a>	3/4 (19.2)	1 (25.4)	1/8 (3.2)	195 (13.4)	
<a href="#">TW-95501-22</a>	13/16 (20.6)	1 (25.4)	3/32 (2.4)	140 (9.7)	
<a href="#">TW-95501-24</a>	7/8 (22.4)	1 (25.4)	1/16 (1.6)	90 (6.2)	
<a href="#">TW-95501-26</a>	1 (25.4)	1 1/4 (31.8)	1/8 (3.2)	152 (10.5)	
<a href="#">TW-95501-28</a>	1 1/4 (31.8)	1 1/2 (38.1)	1/8 (3.2)	124 (8.5)	
<a href="#">TW-95501-30</a>	1 1/2 (38.1)	1 3/4 (44.5)	1/8 (3.2)	105 (7.2)	
<a href="#">TW-95501-32</a>	1 3/4 (44.5)	2 (50.8)	1/8 (3.2)	91 (6.3)	
<a href="#">TW-95501-34</a>	2 (50.8)	2 1/4 (57.2)	1/8 (3.2)	80 (5.5)	

## Cole-Parmer Nylon Tubing



**Applications:** General-purpose lab use.

**Characteristics:** Abrasion-resistant, heat- and light-stabilized. Resists cracking and kinking. Extremely low-level water absorption. Translucent.

**Certifications:** None.

**Temperature range:** -60 to 199°F (-51 to 93°C)

**Sterilize:** Ethylene oxide or gamma irradiation.

Catalog number	Dimensions: in. (mm)			Max psi at 70°F (bar at 21°C)	Price/30.5-m pk
	ID	OD	Wall		
<a href="#">TW-95880-04</a>	0.080 (2.0)	1/8 (3.2)	0.023 (0.6)	1001 (69.0)	
<a href="#">TW-95880-06</a>	3/16 (4.8)	1/4 (6.4)	1/32 (0.8)	249 (17.2)	
<a href="#">TW-95880-10</a>	9/32 (7.1)	3/8 (9.6)	3/64 (1.2)	310 (21.4)	
<a href="#">TW-95880-12</a>	3/8 (9.6)	1/2 (12.8)	1/16 (1.6)	249 (17.2)	
<a href="#">TW-95880-18</a>	1/2 (12.8)	5/8 (16.0)	1/16 (1.6)	600 (41.4)	
<a href="#">TW-95880-20</a>	5/8 (16.0)	3/4 (19.2)	3/32 (2.4)	790 (54.5)	

### Benchtop Tubing Cutter

Steel blade makes right-angle cuts in plastic tubing 1/16" to 5/8" OD.

Catalog number	Description	Price
<a href="#">LZ-06438-10</a>	Benchtop cutter	
<a href="#">LZ-06438-11</a>	Replacement blade	



Distributed by:

Fiedler Scientific Instruments, s.r.o.  
H. Malířové 1, 638 00 Brno, Czech Republic  
Telephone: (+420) 541 222 795

Email: info@lab-eu.com info@pristroje.cz



### Bev-A-Line® IV Tubing



**Applications:** Safe for food, beverage, drug, lab, and general use—yet much more affordable than PTFE tubing. Safe for most alcohols; avoid use with strong solvents.

**Resin characteristics:** Polyethylene liner with ethyl vinyl acetate shell. No plasticizers. Nontoxic and nonhemolytic. Heat-bondable. Translucent.

**Certifications:** Resin is FDA-compliant (liner: 21 CFR 177.1520; shell 21 CFR 177.1350). Meets USP Class VI, USDA, and National Formulary requirements.

**Temperature range:** –30 to 160°F (–51 to 71°C)

**Sterilize:** Ethylene oxide or dry heat.

Catalog number	Dimensions: in. (mm)			Max psi at 70°F (bar at 21°C)	Price/ 15.2-m pk
	ID	OD	Wall		
<a href="#">TW-06490-12</a>	1/8 (3.2)	1/4 (6.4)	1/16 (1.6)	72 (5.0)	
<a href="#">TW-06490-15</a>	1/4 (6.4)	3/8 (9.6)	1/16 (1.6)	61 (4.2)	
<a href="#">TW-06490-17</a>	3/8 (9.6)	1/2 (12.8)	1/16 (1.6)	50 (3.4)	
<a href="#">TW-06490-19</a>	1/2 (12.8)	5/8 (16.0)	1/16 (1.6)	33 (2.3)	
<a href="#">TW-06490-20</a>	1/2 (12.8)	3/4 (19.2)	1/4 (6.4)	50 (3.4)	
<a href="#">TW-06490-39</a>	3/4 (19.2)	1 (25.4)	1/8 (3.2)	39 (2.7)	
<a href="#">TW-06490-40</a>	1 (25.4)	1 1/4 (31.8)	1/4 (6.4)	28 (1.9)	

### Bev-A-Line® V Tubing



**Applications:** Safe for food, beverage, drug, lab, and general use—can withstand higher temperatures than Bev-A-Line® IV tubing. Safe for most alcohols; avoid strong solvents.

**Characteristics:** Polyethylene liner cross-linked to ethyl vinyl acetate shell. No plasticizers. Nontoxic and nonhemolytic. Needs no connectors—heat-bondable. Translucent.

**Certifications:** Resin is FDA-compliant (liner: 21 CFR 177.1520; shell 21 CFR 177.1350). Meets USP Class VI, USDA, and National Formulary requirements.

**Temperature range:** –60 to 200°F (–51 to 93°C)

**Sterilize:** Autoclave, ethylene oxide, or dry heat.

Catalog number	Dimensions: in. (mm)			Max psi at 70°F (bar at 21°C)	Price/ 15.2-m pk
	ID	OD	Wall		
<a href="#">TW-06491-10</a>	1/16 (1.6)	3/16 (4.8)	1/16 (1.6)	91 (6.3)	
<a href="#">TW-06491-12</a>	1/8 (3.2)	1/4 (6.4)	1/16 (1.6)	79 (5.4)	
<a href="#">TW-06491-14</a>	3/16 (4.8)	5/16 (8.0)	1/16 (1.6)	67 (4.6)	
<a href="#">TW-06491-15</a>	1/4 (6.4)	3/8 (9.6)	1/16 (1.6)	67 (4.6)	
<a href="#">TW-06491-16</a>	3/16 (8.0)	7/16 (11.2)	1/16 (1.6)	61 (4.2)	
<a href="#">TW-06491-17</a>	3/8 (9.6)	1/2 (12.8)	1/16 (1.6)	44 (3.0)	
<a href="#">TW-06491-39</a>	3/4 (19.2)	1 (25.4)	1/8 (3.2)	39 (2.7)	

### Bev-A-Line® XX Tubing



**Applications:** High-purity applications and air sampling, gaseous fuels. Ideal for particulate matter (will not adhere to liner) and applications requiring UV resistance.

**Characteristics:** Hytrel® polyester liner and UV-resistant PVC. Tubing is coextruded for improved flexibility. Shell is opaque black.

**Certifications:** Liner resin is NSF-approved for potable water.

**Temperature range:** –20 to 160°F (–29 to 71°C)

**Sterilize:** Autoclave or ethylene oxide.

Catalog number	Dimensions: in. (mm)			Max psi at 70°F (bar at 21°C)	Price/ pk
	ID	OD	Wall		
<a href="#">TW-06491-50</a>	11/64 (4.2)	1/4 (6.4)	3/64 (1.2)	130 (9.0)	/152-m
<a href="#">TW-06491-54</a>	1/4 (6.4)	3/8 (9.6)	1/16 (1.6)	100 (6.9)	/152-m
<a href="#">TW-06491-56</a>	3/8 (9.6)	1/2 (12.8)	1/16 (1.6)	75 (5.2)	/76-m

### Cole-Parmer Polyimide Tubing



**Applications:** Use as an electrical and thermal insulator, for fluid and gas delivery, or as a tough sheath for glass fibers.

**Characteristics:** Excellent chemical, heat, radiation, and abrasion resistance; high dielectric strength. Clear amber.

**Certifications:** Resin meets USP Class VI requirements and NEMA standards.

**Temperature range:** –418 to 896°F (–250 to 480°C)

**Sterilize:** Autoclave, ethylene oxide, or gamma irradiation.

Catalog number	Dimensions: in. (mm)			Max psi at 70°F (bar at 21°C)	Price/ 1.5-m pk
	ID	OD	Wall		
<a href="#">TW-95820-00</a>	0.0049 (0.124)	0.0064 (0.163)	0.00075 (0.019)	700 (48.3)	
<a href="#">TW-95820-01</a>	0.0078 (0.198)	0.0093 (0.236)	0.00075 (0.019)	700 (48.3)	
<a href="#">TW-95820-02</a>	0.0120 (0.305)	0.0140 (0.356)	0.0010 (0.025)	700 (48.3)	
<a href="#">TW-95820-03</a>	0.0135 (0.343)	0.0155 (0.394)	0.0010 (0.025)	700 (48.3)	
<a href="#">TW-95820-04</a>	0.0195 (0.495)	0.0215 (0.546)	0.0010 (0.025)	500 (34.5)	
<a href="#">TW-95820-05</a>	0.0250 (0.635)	0.0270 (0.686)	0.0010 (0.025)	400 (27.6)	
<a href="#">TW-95820-06</a>	0.0320 (0.813)	0.0340 (0.864)	0.0010 (0.025)	300 (20.7)	
<a href="#">TW-95820-07</a>	0.0340 (0.864)	0.0380 (0.965)	0.0020 (0.051)	550 (37.9)	
<a href="#">TW-95820-08</a>	0.0360 (0.914)	0.0400 (1.016)	0.0020 (0.051)	550 (37.9)	
<a href="#">TW-95820-09</a>	0.0395 (1.003)	0.0435 (1.105)	0.0020 (0.051)	500 (34.5)	
<a href="#">TW-95820-10</a>	0.0445 (1.130)	0.0485 (1.232)	0.0020 (0.051)	450 (31.0)	
<a href="#">TW-95820-11</a>	0.0500 (1.270)	0.0540 (1.372)	0.0020 (0.051)	400 (27.6)	
<a href="#">TW-95820-12</a>	0.0575 (1.461)	0.0615 (1.562)	0.0020 (0.051)	350 (24.1)	
<a href="#">TW-95820-13</a>	0.0710 (1.803)	0.0750 (1.905)	0.0020 (0.051)	275 (19.0)	

### Cole-Parmer Polypropylene (PP) Tubing



**Applications:** General lab/industrial use such as injection molding and hot fill applications. More rigid than polyethylene tubing.

**Characteristics:** Good chemical resistance; avoid strong oxidizing agents. Translucent.

**Certifications:** FDA-compliant (21 CFR 177.1520); meets USDA requirements.

**Temperature range:** 32 to 250°F (0 to 121°C)

**Sterilize:** Autoclave or ethylene oxide.

Catalog number	Dimensions: in. (mm)			Max psi at 70°F (bar at 21°C)	Price/ 30.5-m pk
	ID	OD	Wall		
<a href="#">TW-95875-01</a>	3/32 (2.4)	1/8 (3.2)	1/64 (0.4)	270 (18.6)	
<a href="#">TW-95875-02</a>	1/8 (3.2)	1/4 (6.4)	1/16 (1.6)	325 (22.4)	
<a href="#">TW-95875-03</a>	9/64 (3.6)	3/16 (4.8)	1/40 (0.6)	290 (20.0)	
<a href="#">TW-95875-04</a>	3/16 (4.8)	1/4 (6.4)	1/32 (0.8)	270 (18.6)	
<a href="#">TW-95875-05</a>	3/16 (4.8)	5/16 (8.0)	1/16 (1.6)	280 (19.3)	
<a href="#">TW-95875-07</a>	1/4 (6.4)	3/8 (9.6)	1/16 (1.6)	270 (18.6)	
<a href="#">TW-95875-11</a>	3/8 (9.6)	1/2 (12.8)	1/16 (1.6)	206 (14.2)	
<a href="#">TW-95875-12</a>	1/2 (12.8)	5/8 (16.0)	1/16 (1.6)	165 (11.4)	

### Chemical Compatibility



See if it fits your application—  
use our reference pages,  
web site, or smartphone App!

### Standard and Double-Walled PTFE Heat-Shrink Tubing

Shrink ratio: 2:1

Recovery temperature

Standard: 621°F (327°C)

Double-walled: 650 to 700°F  
(343 to 371°C)

Characteristics: Opaque;  
high electrical and chemical  
resistance.



95810-10

Catalog number	Expanded ID in. (mm)	Recovered ID in. (mm)	Price/ 3.7-m pk
<b>Standard</b>			
<a href="#">TW-06851-12</a>	1/8 (3.2)	1/16 (1.6)	
<a href="#">TW-06851-22</a>	1/4 (6.4)	1/8 (3.2)	
<a href="#">TW-06851-32</a>	3/8 (9.6)	3/16 (4.8)	
<a href="#">TW-06851-42</a>	1/2 (12.8)	1/4 (6.4)	
<a href="#">TW-06851-52</a>	3/4 (19.2)	3/8 (9.6)	
<b>Double-walled</b>			
<a href="#">TW-95810-10</a>	3/64 (1.2)	0.023 (0.58)	
<a href="#">TW-95810-11</a>	1/16 (1.6)	1/32 (0.8)	
<a href="#">TW-95810-12</a>	3/32 (2.4)	3/64 (1.2)	
<a href="#">TW-95810-13</a>	1/8 (3.2)	1/16 (1.6)	
<a href="#">TW-95810-14</a>	3/16 (4.8)	3/32 (2.4)	
<a href="#">TW-95810-15</a>	1/4 (6.4)	1/8 (3.2)	
<a href="#">TW-95810-16</a>	3/8 (9.6)	3/16 (4.8)	
<a href="#">TW-95810-17</a>	1/2 (12.8)	1/4 (6.4)	
<a href="#">TW-95810-18</a>	3/4 (19.2)	3/8 (9.6)	
<a href="#">TW-95810-19</a>	1 (25.4)	1/2 (12.8)	

[TW-06851-02](#) Standard PTFE heat-shrink tubing assortment pack.

Contains one 1.2-m length each of 06851-12, -22, -32, -42, -52; total five lengths per pack

[TW-03024-00](#) Dual-temperature 500/750 heat gun; 1680 watts, 120 VAC, 60 Hz

[TW-03026-02](#) Replacement heating element kit for heat gun

[TW-03026-12](#) Heat-shrink tubing adapter for heat gun

[TW-03026-18](#) Pin-point adapter for heat gun

[TW-03026-19](#) Shrink-wrap adapter for heat gun

### Heat-Shrink Tubing Assortment Packs

Now precut lengths are always  
in easy reach

- Available in polyolefin or PVC
- Meet UL, CSA, and military specifications

The tubing assortment includes 6" precut lengths of all-purpose heat-shrink tubing with a 2:1 shrink ratio in a variety of colors. Approximately 175 pieces included in five popular sizes: 3/32", 1/8", 3/16", 1/4", and 3/8". Pack comes in a transparent canister for storage on benchtops or counter tops.



55550-10

Catalog number	Material	Price/pk
<a href="#">TW-55550-00</a>	Polyolefin	
<a href="#">TW-55550-10</a>	PVC	

### Heavy-Duty Tubing Closure

Durable design handles  
higher working pressures

- Quick installation with positive swing-away locking screw
- Smooth contours allow for easy cleaning



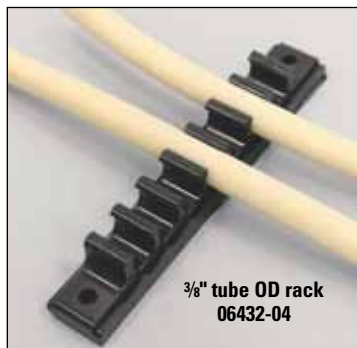
20001-00

Use this clamp with tubing or hose—it meets the working pressure of either item. High-strength polysulfone closure provides excellent durability, can be continually reused, and resists most chemicals. Simply align the hose within the clamp; mating surfaces on the clamp indicate complete closure. Typical applications include sterile filling, media bag connections, pumping, liquid control, and high-purity fluid transfers. FDA-compliant polysulfone material can be sterilized by autoclave or gamma radiation.

Catalog number	Wall thickness range		Price/ea
	Unreinforced	Reinforced	
<a href="#">TW-20001-00</a>	0.090" to 0.190" (2.3 to 4.8 mm)	0.090" to 0.180" (2.3 to 4.6 mm)	

### Tubing Racks

An easy solution to secure and route multiple tubing lines



3/8" tube OD rack  
06432-04



Some racks separate easily  
for more convenient, customized  
tubing retainers.

These tube racks offer a simple and economical method for organizing your tubing lines. The 3/16" and 1/4" sizes can be easily separated down to single holders by hand for increased flexibility and custom tubing arrangements. The 3/16" and 1/4" sizes are available with adhesive fastener, and all sizes are available with through holes for secure mounting (mounting screws are not included).

Catalog number	Tubing OD	Fastener	Number of channels	Qty/pk	Price/pk
<a href="#">TW-06432-02</a>	3/16" (4.8 mm)	Through holes	10	10	
<a href="#">TW-06432-07</a>	3/16" (4.8 mm)	Adhesive	10	10	
<a href="#">TW-06432-03</a>	1/4" (6.4 mm)	Through holes	10	10	
<a href="#">TW-06432-08</a>	1/4" (6.4 mm)	Adhesive	10	10	
<a href="#">TW-06432-04</a>	3/8" (9.6 mm)	Through holes	7	10	
<a href="#">TW-06432-05</a>	1/2" (12.7 mm)	Through holes	5	10	

Distributed by:

Fiedler Scientific Instruments, s.r.o.  
H. Malířové 1, 638 00 Brno, Czech Republic  
Telephone: (+420) 541 222 795

Email: [info@lab-eu.com](mailto:info@lab-eu.com) [info@pristroje.cz](mailto:info@pristroje.cz)